

**PRESTON**  
COLLEGE

**CONGRATULATIONS**  
**YOU ARE IN!**

YOUR GUIDE TO PRESTON COLLEGE

[www.preston.ac.uk](http://www.preston.ac.uk)

  
**Ofsted**  
Good  
Provider

 **educate**  
north  
awards

FURTHER EDUCATION  
COLLEGE OF THE YEAR  
**2020 WINNER**

# WELCOME TO PRESTON COLLEGE

Despite these restrictive times, Preston College is continually committed to providing you with an outstanding educational experience by delivering high quality teaching and learning in order for you to succeed on your chosen course.

As a new learner at Preston College we want to make sure that you get the best start and this guide will help you to prepare for life at Preston College. In this guide you'll find details on how to apply for a bursary online, information on buses, as well as answers to some of our most frequently asked questions.

On GCSE results day, **Thursday 25th August**, we will be enrolling you remotely. You will receive your link to your enrolment account via email. If you are unable to upload your GCSE results you can email our Recruitment Team on [guidance@preston.ac.uk](mailto:guidance@preston.ac.uk), where someone will be able to help you.

After completing the enrolment process, you will receive your learner ID badge and details of your induction programme.

We will keep you updated with the August 2022 enrolment process by sending you an enrolment guide over the summer period. However, in the mean time we have careers advisors on hand within our Career Zone. To book an appointment call **01772 225482**.

I am delighted that you have chosen Preston College and look forward to welcoming you in September 2022.



Louise Doswell  
Principal & Chief Executive

Dear

Great news. You're in! Competition for places this year has been high, so we are delighted to award you a place on

---

At Preston College, we believe in making our students the most employable. This means that you gain the skills, knowledge and experience to progress on to university or straight into the world of work, and that's what makes us the smart choice.

Next steps - Your next step is to attend a Curriculum welcome evening in Spring. We'll send you a letter nearer the time with everything you need to know. In the meantime, if you have any questions please contact our Applications & Enrolment Team on **01772 225081** or email [applications@preston.ac.uk](mailto:applications@preston.ac.uk).

Additional Learning Support - If you have a learning difficulty, disability or medical condition which may affect your learning, please contact our Transition Team on **01772 225328**, text **07795 527444** or email [transition@preston.ac.uk](mailto:transition@preston.ac.uk) to discuss your requirements.

Student Services - If you have any questions about any financial support, which may include assistance with the cost of equipment, transport or free college meals that may be available to you, please contact our Student Services Team on **01772 225656** or email [studentservices@preston.ac.uk](mailto:studentservices@preston.ac.uk).

We would like to take this opportunity to welcome you as a future student at Preston College and wish you the very best of luck with your upcoming exams.

Yours sincerely

A handwritten signature in black ink, appearing to read 'Debbie Ireland'. The signature is stylized and written in a cursive-like font.

Debbie Ireland  
Head of Curriculum 14-19

# NEXT STEPS

Now that you have completed your interview and received your conditional offer, it is important that you are aware of the next steps in terms of becoming a Preston College student.

In the spring term you will be invited to attend one of our welcome evenings, where you will have the opportunity to experience a session in your chosen course, see the facilities and meet curriculum staff. If you have any questions you will be able to ask these on the evening. At the welcome event our Executive Leadership Team will address parents with a presentation outlining helpful information in relation to enrolment and becoming a college student.

Over the 2022 summer term we will keep you informed of enrolment dates by sending personalised communications and a college enrolment guide.

In the meantime if you have any additional questions you wish to ask please contact the School's Recruitment Team on [01772 225517](tel:01772 225517).

We wish you all the best in your GCSE examinations.



# ENROLMENT

On receipt and activation of your personal enrolment account, you will be able to start your enrolment process, and this will allow us to confirm your grades and determine the correct level of programme to enrol you onto. You will be able to upload your results on any of the dates below and we will have a range of staff on hand to support you on these days if needed.

- GCSE Results Day (Thursday 25th August, 9am-7pm)
- Friday 26th August, 9am-5pm
- Saturday 27th August, 9am-2pm
- Tuesday 30th August, 9am-5pm
- Wednesday 31st August, 9am-5pm

If you are unable to enrol online on any of the dates given, or do not have internet access please email [guidance@preston.ac.uk](mailto:guidance@preston.ac.uk) or call [01772 225517](tel:01772 225517) and we will look at an alternative way of enrolling you.

As part of your virtual enrolment process you will need:

- Your GCSE results to upload to our enrolment portal
- If applying for a bursary you will also need a bank account and evidence to support your bursary application

## WHAT CAN I DO BEFORE ENROLMENT?

### Bursary Applications

If you are applying for a bursary, you don't need to wait until enrolment! You

can apply from week commencing 2nd May 2022 by visiting [www.preston.ac.uk/bursary](http://www.preston.ac.uk/bursary). You'll need to submit recent evidence of your household income. If you need any support to complete your application please call Student Services on [01772 225566](tel:01772 225566) or email [studentservices@preston.ac.uk](mailto:studentservices@preston.ac.uk).

### Check Bus Information

Take a look at our guide to the bus services on pages 9, 10 and 11.

### Questions

If you have any questions about enrolment or the information in this guide call us on [01772 225517](tel:01772 225517).



# BURSARY

Learners are able to apply for further help towards the cost of equipment, uniform and travel from the College Bursary funds, unless you are on an Apprenticeship or HE programme.

Details of the bursaries available are:

## VULNERABLE BURSARY (16-18 year olds only)

Learners from the following categories are entitled to this bursary:

- In care (including unaccompanied Asylum Seekers)
- A Care Leaver
- In receipt of Income Support/ Universal Credit
- In receipt of Employment Support Allowance AND Disability Living Allowance/Personal Independence Payment.

## 16-18 Discretionary Learning Support Fund

Provides financial help towards the cost of essential equipment, kit (uniform) and travel.

## 16-19 Childcare

Funded through the Government's Care to Learn scheme, with a maximum weekly threshold of £160 per child. See [www.gov.uk/care-to-learn](http://www.gov.uk/care-to-learn) for more details.

## Free College Meals

Learners aged between 16-18 years old (excluding apprentices) at the start of their course can access free college meals if they or their parents

are in receipt of the following benefits or have a household income less than £16,190:

- Income Support
- Income based Jobseekers Allowance (JSA)
- Income based Employment and Support Allowance (ESA)
- Support under part VI of the Immigration and Asylum Act 1999
- Child Tax Credit (provided they are not entitled to Working Tax Credit and have an annual gross income of no more than £16,190)
- Working Tax Credit run-on
- Universal Credit with net earnings not exceeding the equivalent of £7,400 pa

If you are aged 19 and continuing on the same study programme that you started before you turned 19, or are aged 19-24 and have a current Education Health and Care Plan (EHCP), you could also be eligible.

**Eligibility for the bursary fund is based on a household income of less than £25,000. Evidence of income needs to be uploaded or emailed to Student Services at [studentservices@preston.ac.uk](mailto:studentservices@preston.ac.uk). Learners will also need access to their own bank accounts.**

**Applicants from a large family will need to see a Welfare Officer.**

# BUS INFORMATION 2022/23

Preston College is easily accessible by bus, via operators Preston Bus, Stagecoach and Transdev (East Lancs). 16-18 year old learners studying with us in the academic year 2022/23 will be updated with regards to all travel information within the enrolment guide sent to all learners over summer.

The following buses are direct - this means that they drop off and pick up from the Fulwood Campus.

- 125C Chorley
- 61C Wrea Green (via Kirkham)
- 40A Lancaster
- 59C Blackburn
- 68C Blackpool

Other bus routes go via Preston Bus station, where learners can catch the Stagecoach 125 service to college.

Preston Bus also provide a number of services which run regularly in close proximity to the college. These services include 19, 23 and 15.

Preston Bus timetables and routes can be found at [www.prestonbus.co.uk](http://www.prestonbus.co.uk)

Stagecoach bus timetables and routes can be found at [www.stagecoachbus.com](http://www.stagecoachbus.com)



TURN OVER  
FOR OUR  
BUS GUIDE

The College also provides bus passes for the following routes:

**Stagecoach: 280**

Covers Preston to Skipton via Whalley and Clitheroe

**Transdev: 152**

Burnley - Blackburn - Preston via Padiham, Clayton-le-Moors and Feniscowles

**Transdev: 153**

Leyland to Preston, via Bamber Bridge and Higher Walton

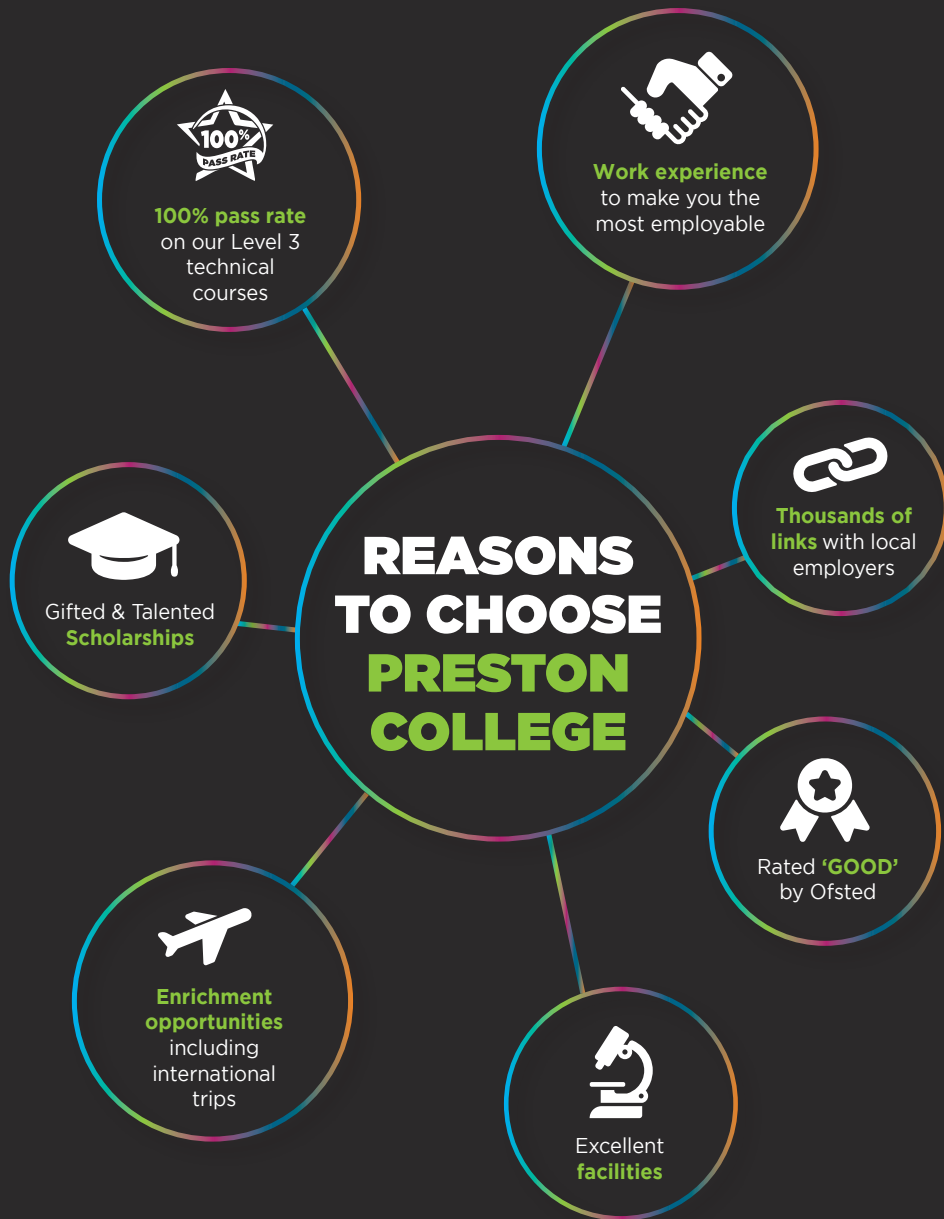
Stagecoach 125 service runs at regular intervals during the day from Preston Bus Station to Royal Preston Hospital, stopping outside the college



**Indirect Services to Preston's College via Preston Bus Station**

- 1 Longridge to Preston
- 2 Southport to Preston
- 2A Ormskirk to Preston
- 45 Blackburn to Preston
- 109 Chorley to Preston
- 111 Leyland to Preston
- X2 Southport to Preston (not shown on map)

Preston Bus also provide services 19, 23, 43 and 45 which run regularly in close proximity to the College



**PROUD TO PROVIDE EXCELLENCE  
IN TECHNICAL EDUCATION AND TRAINING**

# LEARNER SUPPORT

(SEND)

**The Learner Support Team aim to provide a supportive platform for all learners to reach their goals.**

- > Do you have a learning difficulty, disability and or medical condition?
- > Do you have an EHC plan?
- > Have you received exam support including extra time, scribe or smaller room in exams?

Come and speak with the SEND team at enrolment, together we can discuss your support needs and create an individual support plan.

If you have already been offered a place at college and have met with the Learner Support team, remember to bring any specialist and medical reports to enrolment including:

- > **Medical reports**
- > **GP letters**
- > **EHC plans**
- > **Specialist reports**

If you have an EHCP, the College requires a copy of the plan and time to review the document, before enrolment, to ensure that we can meet your individual needs.

If you would like to talk through your potential support needs before enrolment you can book an appointment by calling **01772 225328** or email [transition@preston.ac.uk](mailto:transition@preston.ac.uk).



# INDUSTRY PLACEMENTS AND TASTERS

Work experience is an important part of your time at Preston College and is essential in making you the most employable.

Undertaking an Industry Placement and Taster will allow you to:

- Develop employment skills
- Learn new technical skills
- Learn to communicate with employers
- Improve your CV ready for work
- Gain employment opportunities
- Learn to network and create your own network
- **Prepare for the demands and expectations within the workplace**
- **Make an informed decision on your career**
- **Improve your maturity, confidence and self-reliance**

The amount of work experience you need to complete depends on your course and the level of study. Here is a snapshot of what you can expect, but remember you need to discuss this with your tutor:

## Level 1 Courses:

- Introduction to employers (site visits, college visits, interview practice)
- Volunteering in the community
- 1 or 2 days in the workplace (where applicable)

## Level 2 Courses:

- Introduction to employers (site visits, interview practice, employer projects)
- Required to complete 1 or 2 week taster with an employer

## Level 3 Courses:

- Required to complete 1 or 2 week taster with an employer
- T-Level Introduction (minimum of 315 hours industry placement in the workplace in year 2)
- Volunteering in the community to improve employability skills

## T-Levels:

- Introduction to employers (site visits, interview practice, employer projects)
- Required to complete 1 or 2 week taster with an employer

The Work Experience Team, alongside the Careers Team and your tutors, will work with you to ensure you are ready for, and will benefit from, working within a relevant business to supplement your academic studies. Find us on the High Street!

# ENRICHMENT

As a Preston College learner you have access to guest speakers, trips and learning experiences outside of the classroom. Here are some pictures from the last academic year to give you a taste of what's to come.



## Careers development

At Preston College we are committed to ensuring that all of our learners have access to careers guidance and experiences that enable them to progress, succeed and make them THE most employable. The purpose of all careers interactions is to make it possible for learners to engage proactively in decisions about their future and career journey. We want to challenge and motivate our learners to build their skills and level of commitment so that they feel confident and able to compete with the very best in any sector.

Preston's College have a structured and targeted careers programme delivered to all cohorts through

tutorials with regular input from external providers such as universities, apprenticeship providers and employers.

Our Career Coach website is designed to give you the most up-to-date information on jobs and career prospects across Lancashire and the UK, providing you with insightful information to help you decide how choosing a course at Preston College will help you on your journey. Career Coach also includes an online CV builder which you can access and regularly update.

To access Career Coach please visit <https://preston.emsicc.com/>

# FREQUENTLY ASKED QUESTIONS

## I've changed my mind about the course I want to study?

During the enrolment process we will have a number of staff on hand to change your application. Please call [01772 225517](tel:01772225517) and we will have somebody on hand to assist you. If you are unsure on the course you want to study then you can also speak to one of our careers advisors who will be able to advise you.

## How long does enrolment take?

Over summer you will have the opportunity to complete processes such as bursary applications and this will save you time on GCSE results day. If you need to speak with Student Services, SEND, or the bus pass team then you can do this by calling [01772 225656](tel:01772225656). Throughout July and August we are on hand to answer any queries. Email [guidance@preston.ac.uk](mailto:guidance@preston.ac.uk) or call [01772 225517](tel:01772225517) and we can assist you with any college enquiries.

## My circumstances have changed since I applied - who should I tell?

Before enrolment get in touch with the Application & Enrolment Team on [01772 225081](tel:01772225081) or email [applications@preston.ac.uk](mailto:applications@preston.ac.uk).

## What time do classes start and end?

Classes start at 9.15am and end at 4.15pm. There are four periods during the day.

## Can I take holidays during term-time?

No. You'll find the term dates on the back of this guide to help you plan the year.

## When will my first day be?

Your first day will be an induction to the college and will be communicated with you over the enrolment period.

## When will I get my timetable?

You will get your timetable at induction. Your timetable is bespoke to you, it is built based on your grades, course of study and enrichment activities.

## How do I keep up to date with college information?

We are continually updating our website with relevant information. Please visit [www.preston.ac.uk](http://www.preston.ac.uk) or visit our social media platforms

 [@prestoncollege](https://www.instagram.com/prestoncollege)

 [/prestoncollege](https://www.facebook.com/prestoncollege)

## DID YOU KNOW YOU CAN STUDY AN A-LEVEL ALONGSIDE YOUR LEVEL 3 COURSE?

Studying an additional qualification can earn you more UCAS points and strengthen your application for university or career opportunities.

### HOW IT WORKS

**STEP 1:** Choose your Level 3 programme (to study a Level 3 course you need to have at least five GCSEs at grade 4 or above).

**STEP 2:** Choose your A-Level option and meet the entry criteria detailed in the table below.

#### A-Level Extra

A-Level Maths

A-Level English

Level 3 Applied Law

#### Entry Criteria

Five GCSEs at Grade 5 including English. You will also need Maths at Grade 7.

Five GCSEs at Grade 5 including Maths. You will also need English at Grade 7.

Five GCSEs at Grade 5 including Maths and English.

If you wish to study on the A-Level Extra programme please speak to a member of staff at enrolment.

## Preston College COUNSELLING SERVICE

Preston College offers a free and confidential counselling service for our students. We offer support on a wide range of issues. If you're struggling, talking to someone can really help.

To make a confidential appointment with a counsellor visit Student Services in EA004



**T:** 01772 22 56 56 **E:** [counselling@preston.ac.uk](mailto:counselling@preston.ac.uk) **Text:** 07766 777199

**PRESTON**  
COLLEGE

Explore • Reflect • Understand